

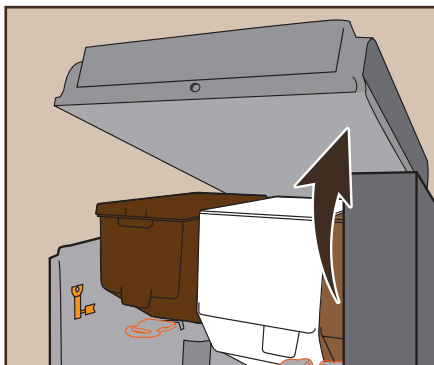


# BARISTA Compact

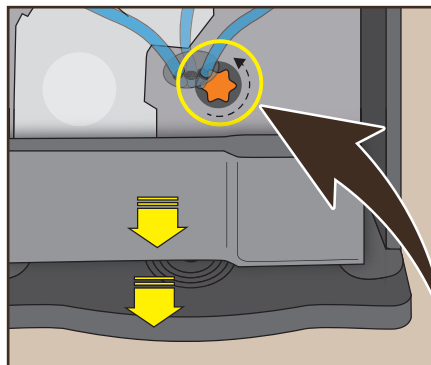
## Cleaning Instructions

The BARISTA Compact requires the automatic rinsing program to be enabled for weekly cleaning with a cleaning tablet.

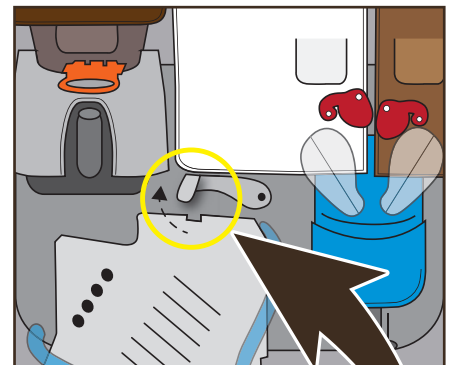
### 1 x weekly cleaning (max. 10 minutes)



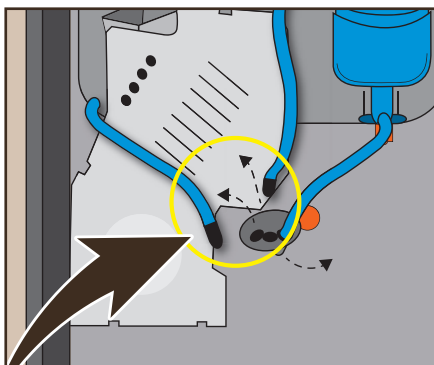
1 Open the machine door.



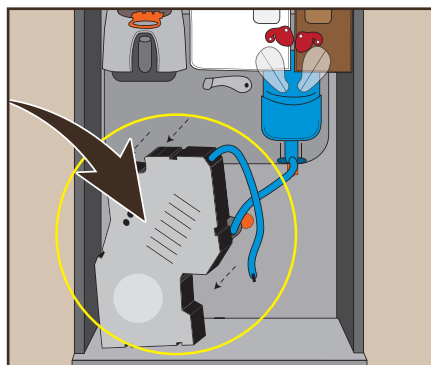
2 Remove the coffee grounds container and drip pan, and unscrew the orange screw cap.



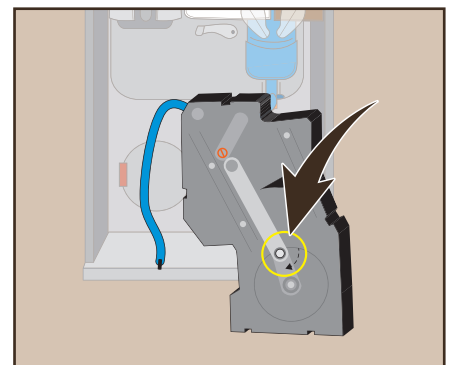
3 Push the brewer's retaining brackets upwards.



4 Remove the delivery tube on the left and the coffee tube directly next to it, and allow them to hang down loosely. Turn the product delivery bracket to the right and lock it in place.

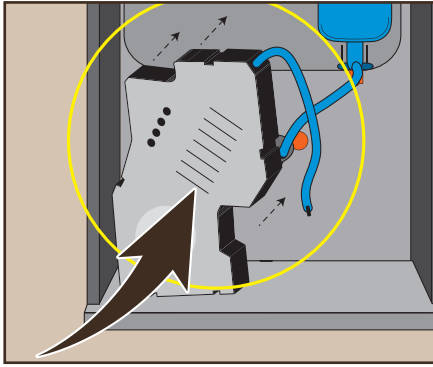


5 Remove the brewer at an angle forwards.

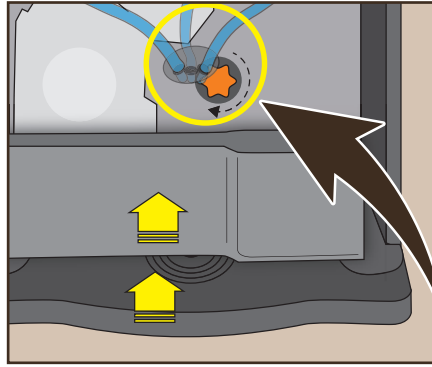


6 Push the bolt for the crank drive on the back of the brewer clockwise downwards.

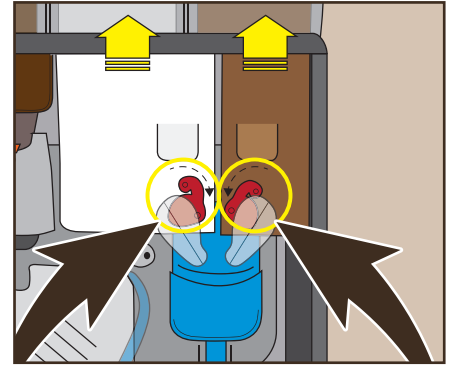




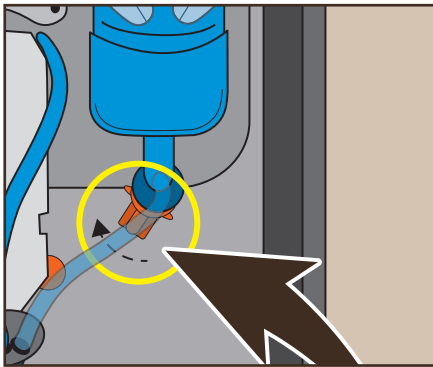
**7** Clean the internal coffee strainers under running water and then reinstall the brewer in reverse order between the red retaining clips.



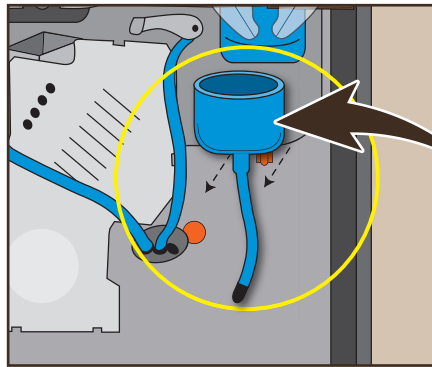
**8** Reinstall the drip pan and coffee grounds container. Screw in the orange screw cap, turn the product delivery bracket to the left and insert the delivery tubes.



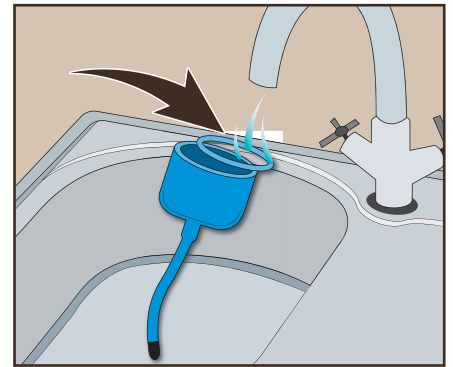
**9** Seal both caps and remove the product container upwards.



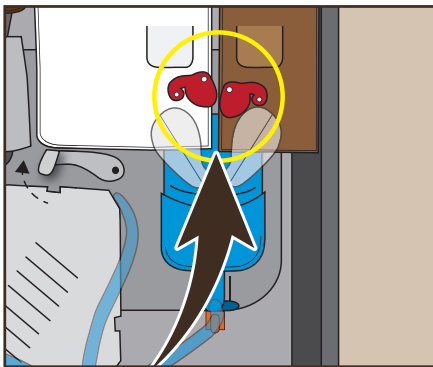
**10** Push the orange bayonet lock up approx. 30 degrees clockwise.



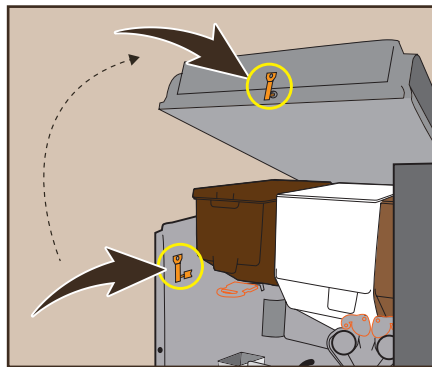
**11** Fully release the light blue hose at the delivery outlet. Remove the complete mixer and tube forwards.



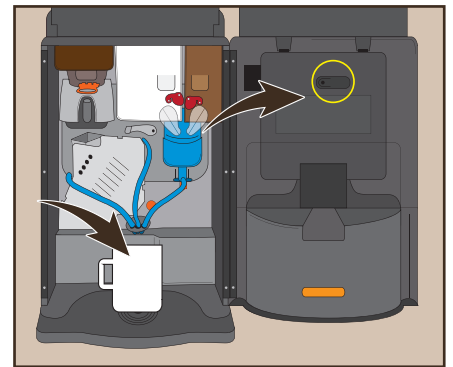
**12** Use a cleaning brush to clean the light blue mixer and use a narrow brush to clean the delivery hoses. Thoroughly dry the mixer. Reassemble the parts in reverse order.



**13** **Caution:** Reopen the covers of the two product containers.



**14** Remove the service key from its holder on the left wall of the housing and start up the machine.



**15** Place the rinsing cup under the spout. Then press the program button in the door.



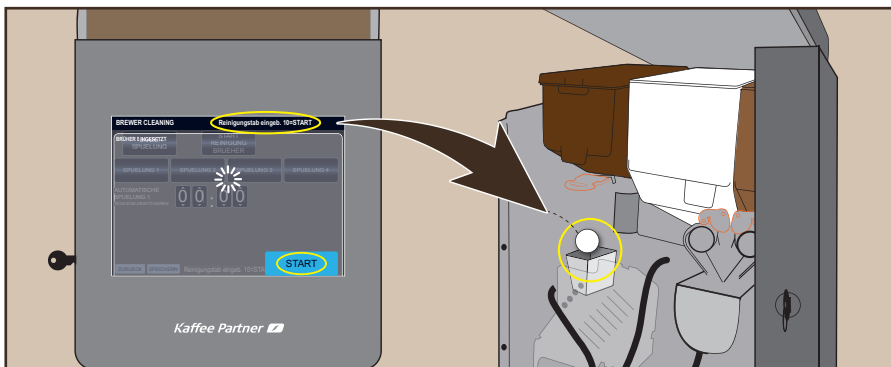
16 Press the "CLEANING" button.



17 Press "START BREWER CLEANING" to start the overall rinsing program.



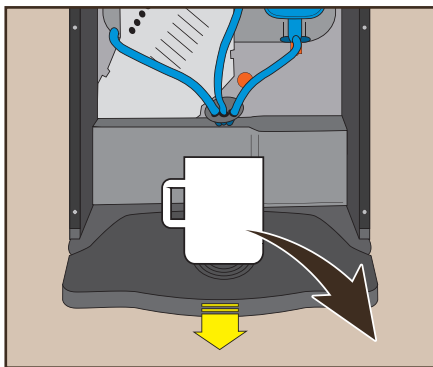
18 Confirm cleaning by pressing "YES". Wait for the brewer rinsing process to end.



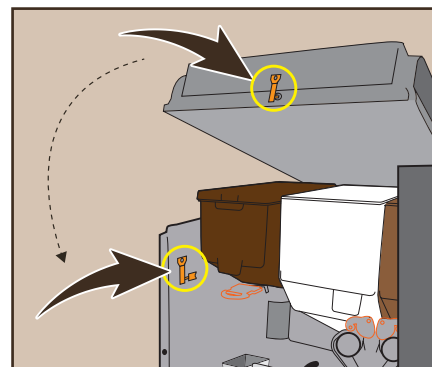
19 Insert the Kaffee Partner cleaning tablet into the funnel and press "START" to confirm.



20 Wait for the rinsing processes to end and press "BACK" to return to the starting menu.



21 Remove the rinsing cup and drip pan, and rinse under running water. Reinstall the drip pan.



22 Remove the service key and close the machine again.



**Note:** Make sure that all parts are completely dry before reinserting them into the machine.

# Emergency Service

Don't panic if something goes wrong.  
The key error messages at a glance:

Display	Cause	Solution (Always restart your machine afterwards)
Service OFF 2	Payment system fault.	Check the connection.
No Water OFF 6	No water to fill the machine. The water tank is empty. The water supply is insufficient.	Switch off the machine. Top up with water. Restore the water supply. Switch the machine on again.
Service OFF 8	The brewer is blocked. The brewing time has been exceeded. The grind is too fine.	Clean the brewer.
No Coffee OFF 8 B	The brewer has not been installed properly. The metal bracket fixing the brewer in place at the top has not snapped in completely.	Fully remove and reinstall the brewer, then press down the metal bracket as far as it will go.

Should you have further questions, refer to the operating instructions at: [kpinfos.de/manuals](http://kpinfos.de/manuals) or phone or email our Service Hotline.



Service Hotline  
+49 (0) 541 75045-400



Service email  
[support@kaffee-partner.de](mailto:support@kaffee-partner.de)



Product Ordering Hotline  
+49 (0) 541 75045-100

## Kaffee Partner

Kaffee Partner GmbH  
Kaffee-Partner-Allee 1  
49090 Osnabrück · Germany  
[www.kaffee-partner.de](http://www.kaffee-partner.de)



Service Hotline  
+43 (0) 662 2682-37



Service email  
[support@kaffee-partner.at](mailto:support@kaffee-partner.at)



Product Ordering Hotline  
+43 (0) 662 2682-35

## Kaffee Partner

Kaffee Partner Austria GmbH  
Himmelreich 1  
5020 Salzburg · Austria  
[www.kaffee-partner.at](http://www.kaffee-partner.at)



Service Hotline  
+41 (0) 41 74100-52



Service email  
[support@kaffee-partner.ch](mailto:support@kaffee-partner.ch)



Product Ordering Hotline  
+41 (0) 41 74100-50

## Kaffee Partner

Kaffee Partner Schweiz AG  
Hinterbergstrasse 24  
6312 Steinhausen · Switzerland  
[www.kaffee-partner.ch](http://www.kaffee-partner.ch)